

WeldWrap™



“The ONLY Composite Repair Sleeve Designed for Girth Weld Zone Reinforcement”

- *D.O.T./CSA/ASME PCC-2/ISO TS-24817 Compliant • No Shutdown*
- *No Hot Work • No Heavy Equipment • 30 Minute Installation*
- *“Smart Pig” Detectable • Diamond Lock Technology*



Composite Solutions for Piping and Structures

2701 State Highway 322 Longview, Texas 75603

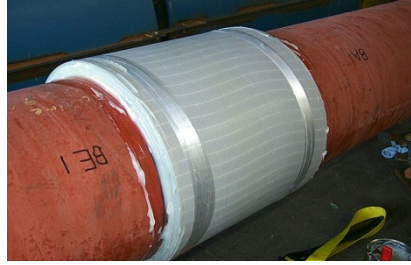
Longview, TX (903) 643-8080

AN ADVANCEMENT IN PIPE REPAIR

Defect - 6.5" x 6.5" x .300" Deep



Completed Installation in 35 minutes



Pipe Body Failure @ 4,260 psi



WeldWrap™ Kit:

- ◆ **WeldWrap™ Composite Sleeves** - use a superior laminate construction with proven materials to form a high tensile strength rigid "magnetically detectable" fiberglass wrap for the PERMANENT structural reinforcement of external defects to 80% wall loss.
- ◆ **Two-part proprietary Adhesive System** used to bond the WeldWrap™ Sleeve to the pipe surface and to composite layers to form a monolithic structure.
- ◆ **Two-part proprietary high compressive strength Putty** used to fill all cavities and tented areas to ensure a "load-transfer" path from the pipe surface to the WeldWrap™ Sleeve.
- ◆ **Installation Accessory Kit** provides all items to properly apply the WeldWrap™ System with minimal additional tooling.
- ◆ **The WeldWrap™ System Repairs 4" thru 60" Diameter Piping.**
- ◆ **The WeldWrap™ Kit comes in two (2) standard widths - 12" & 18".**
- ◆ **Manufactured under US Patent # 6,774,066**

Repair:

- ◆ Corrosion Defects
- ◆ Blunt Dents and Gouges
- ◆ Girth Weld Zone
- ◆ Vertical & Horizontal Piping
- ◆ Corrosion at Pipe Supports

Testing:

- ◆ Cyclic Fatigue to 120,000 Cycles
- ◆ Dent Fatigue to 305,000 Cycles
- ◆ Hydrostatic Burst - Bare Pipe & Reinforced
- ◆ Adhesive Bond Testing
- ◆ Tensile Strength Evaluations
- ◆ Compressive Strength Evaluations

Material Properties:

Cure Time	2 Hours
Max Operating Temperature	161 °F/72°C
Tensile Strength	90,000 psi
Tensile Modulus (psi)	5.0 msi
Flexural Strength (psi)	12,000 psi
Flexural Modulus (psi)	4 msi
% Elongation @ 77 °F - Composite	1%
% Elongation @ 77 °F - Adhesive	40%
% Elongation @ 77 °F - Putty	<1%
Lap Shear Strength @ 140 °F - Adhesive (psi)	1,600 psi
Compressive Strength @ 140 °F - Putty (psi)	10,000 psi
Hardness - Shore D	78

For more information visit us at: www.wrapmaster.us or email us at: sales@wrapmaster.us